



LOGIC MONOSPACE IS A TECHNICAL TYPE  
SYSTEM WITH EXPRESSIVE POTENTIAL.

m	o	n	o	s	p	a	c	e	d
---	---	---	---	---	---	---	---	---	---

<i>m</i>	<i>o</i>	<i>n</i>	<i>o</i>	<i>s</i>	<i>c</i>	<i>r</i>	<i>i</i>	<i>p</i>	<i>t</i>
----------	----------	----------	----------	----------	----------	----------	----------	----------	----------

INTRODUCTION TO

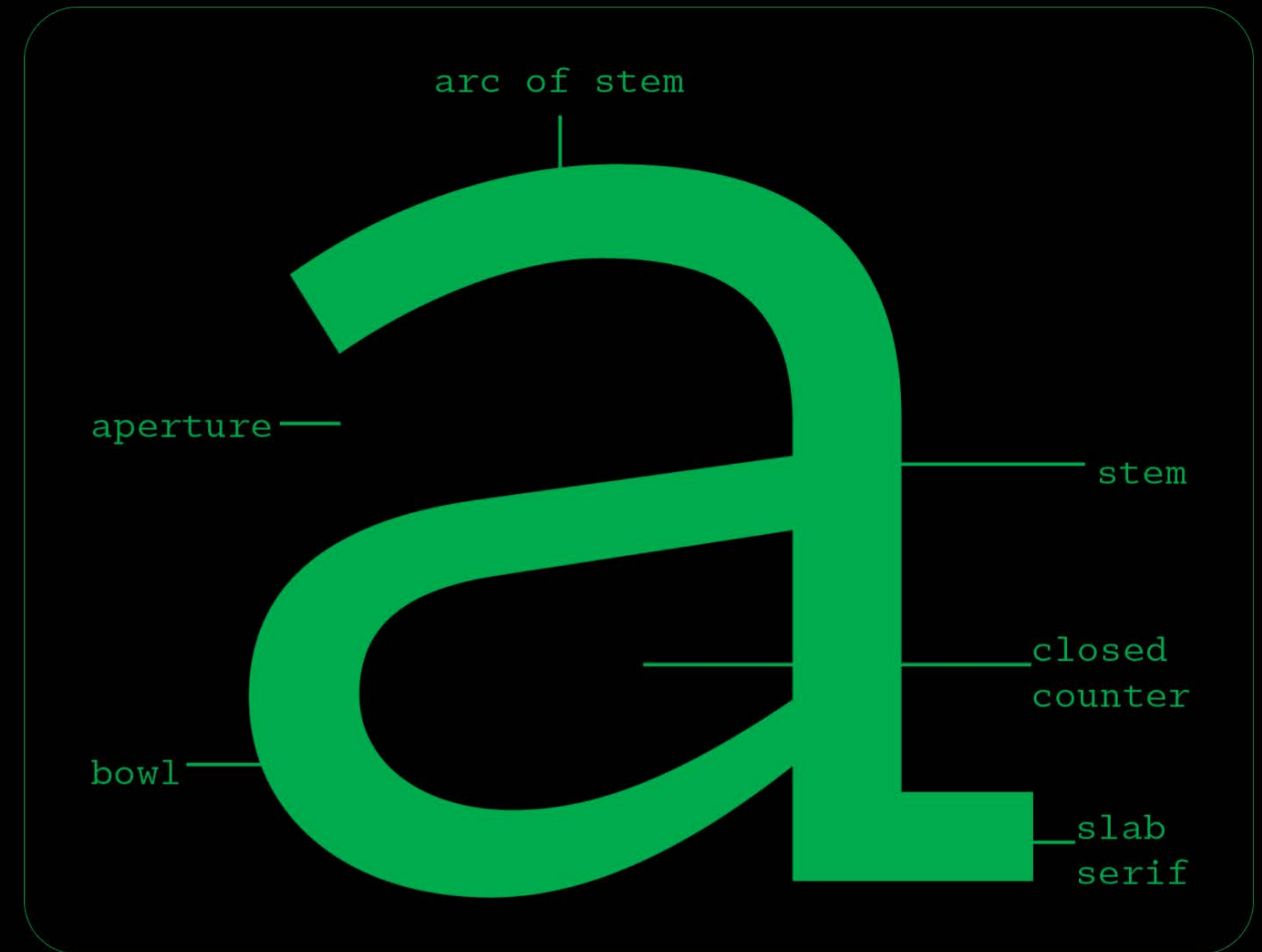
# The Challenge

## THE CONTEXT

- <It introduces atmosphere>
- <It creates momentum>
- <It invites engagement>

## THE OBJECTIVE

- <ASCII-inspired graphics>
- <Structured grids>
- <Terminal-style hierarchy>





# Target Audience

<Designers and developers who work with code or digital interfaces>

<Typographers and editorial designers seeking a functional reference for a modern monospace family>

<Tech and retro-computing enthusiasts who appreciate terminal aesthetics and ASCII-inspired visual systems>

```
,xXWMWWNk;  
;KMMMMMMMMX:  
cNMWMMWMMWl  
.dNMMWWMNx.  
 ,lxxxxo,.  
. ,looddoooooooc.  
.kNMMMMMMMMMMWMMWXd.  
oWMMMMMMMMMMWMMMMWMO  
.xMWkdXMMMMMMMMMXdxWMx.  
.xMWc,OMMMMMMMMMO,:NMx.  
.xMWc,OWMMMMMMMMO,:NMx.  
.xMWc'OMMMMMMMMMO':NMx.  
.xMWc'OMMMWMMMMO':NMx.  
.xMWc'OMMMWNNWMMMO,:NMk.  
.xMWc'OMMMx;;kMMMO,:NMx.  
:Ok,'OMWMO oMMMO,'xO:  
'OMMO..oMMK,  
'OMMO..oMMK,  
'OMMO..oMMK,  
'OWMMO..oMMK,  
'OMMd..oMMK,  
'OMMd..oMMK,  
'OMMd..oMMK,  
'OMMO..oWMMO'  
.dNMX; ;KMWx.
```

Light

Aa Bb Cc Dd Ee Ff Gg Hh Ii Jj Kk Ll Mm  
Nn Oo Pp Qq Rr Ss Tt Uu Vv Ww Xx Yy Zz  
!@#\$%^&\*()-+=?\_` ;”:'{ }. [ ], \ / < > ~  
1234567890

---

Regular

Aa Bb Cc Dd Ee Ff Gg Hh Ii Jj Kk Ll Mm  
Nn Oo Pp Qq Rr Ss Tt Uu Vv Ww Xx Yy Zz  
!@#\$%^&\*()-+=?\_` ;”:'{ }. [ ], \ / < > ~  
1234567890

---

Italic

*Aa Bb Cc Dd Ee Ff Gg Hh Ii Jj Kk Ll Mm  
Nn Oo Pp Qq Rr Ss Tt Uu Vv Ww Xx Yy Zz  
!@#\$%^&\*()-+=?\_` ;”:'{ }. [ ], \ / < > ~  
1234567890*

---

Bold

**Aa Bb Cc Dd Ee Ff Gg Hh Ii Jj Kk Ll Mm  
Nn Oo Pp Qq Rr Ss Tt Uu Vv Ww Xx Yy Zz  
!@#\$%^&\*()-+=?\_` ;”:'{ }. [ ], \ / < > ~  
1234567890**

---

Bold Italic

***Aa Bb Cc Dd Ee Ff Gg Hh Ii Jj Kk Ll Mm  
Nn Oo Pp Qq Rr Ss Tt Uu Vv Ww Xx Yy Zz  
!@#\$%^&\*()-+=?\_` ;”:'{ }. [ ], \ / < > ~  
1234567890***

---

Light

Logic is a technical monospace typeface in 5 weights with a special connecting script version. The design takes inspiration from midcentury typewriter fonts with reference to slab serifs.

14 pt

---

a  
60 pt

Regular

Logic is a technical monospace typeface in 5 weights with a special connecting script version. The design takes inspiration from midcentury typewriter fonts with reference to slab serifs.

14 pt

---

a  
60 pt

Italic

*Logic is a technical monospace typeface in 5 weights with a special connecting script version. The design takes inspiration from midcentury typewriter fonts with reference to slab serifs.*

14 pt

---

*a*  
60 pt

Bold

**Logic is a technical monospace typeface in 5 weights with a special connecting script version. The design takes inspiration from midcentury typewriter fonts with reference to slab serifs.**

14 pt

---

**a**  
60 pt

Bold

Italic

***Logic is a technical monospace typeface in 5 weights with a special connecting script version. The design takes inspiration from midcentury typewriter fonts with reference to slab serifs.***

14 pt

---

***a***  
60 pt

Logic is a warmly technical monospace typeface in 5 weights of roman and italic styles, with a special connecting script version. The design takes inspiration from midcentury typewriter fonts, including IBM Selectric’s Advocate and the ubiquitous Courier, with additional references in slab serifs like Stephenson Blake’s Scarab. While there are many great script typewriter fonts, including Olympia and Aristocrat, Logic monospace is a novel creation, with few examples of true connecting monospace scripts in existence.

Designed by Jeremy Mickel, with assistance by Douglas Hayes

# Logic

Monospace typeface  
*Monospace typeface*  
*Monospace typeface*  
 Monospace typeface  
 Monospace typeface  
*Monospace typeface*  
**Monospace typeface**  
**Monospace typeface**  
**Monospace typeface**  
**Monospace typeface**

***Monospace typeface***  
**Monospace typeface**  
***Monospace typeface***  
**Monospace typeface**  
*Monospace typeface*  
 Monospace typeface  
 Monospace typeface  
*Monospace typeface*  
*Monospace typeface*  
 Monospace typeface

# Logic

Monospace

*slab serif*

**no-nonsense,**

information-presenting  
occasions where anything  
flowery or billboard-  
worthy is totally  
unnecessary.

Mixing **technical precision**,  
typewriter fetishization, and  
*renaissance flair*.

# Option 1

<p>Logic Monospace</p>	<p># history</p> <p>Back- END</p> <p>“ ”</p>	<p>characteristic #</p> <pre>//use algorithm { } { } { }</pre>
------------------------	--	--

<p># anatomy</p> <p>accent</p> <p>False</p> <p>descent</p> <pre>1 2 def logic_monospace 3 class - slaw serif 4 5 6 7 8 9 10</pre>	<p>anatomy #</p>	<p># weights</p>	<p>characters #</p> <pre>1 ##decompositions# 2 3 def type - case 4 5 6 while NUM = 7 8 9 def special_characters 10 11 for glyphs in alternak: 12 print ( )</pre>
---	------------------	------------------	--

<p>monospaced</p> <p>monoscript</p>	<p>“ I, Robot ”</p> <p>note</p>	
-------------------------------------	---------------------------------	--

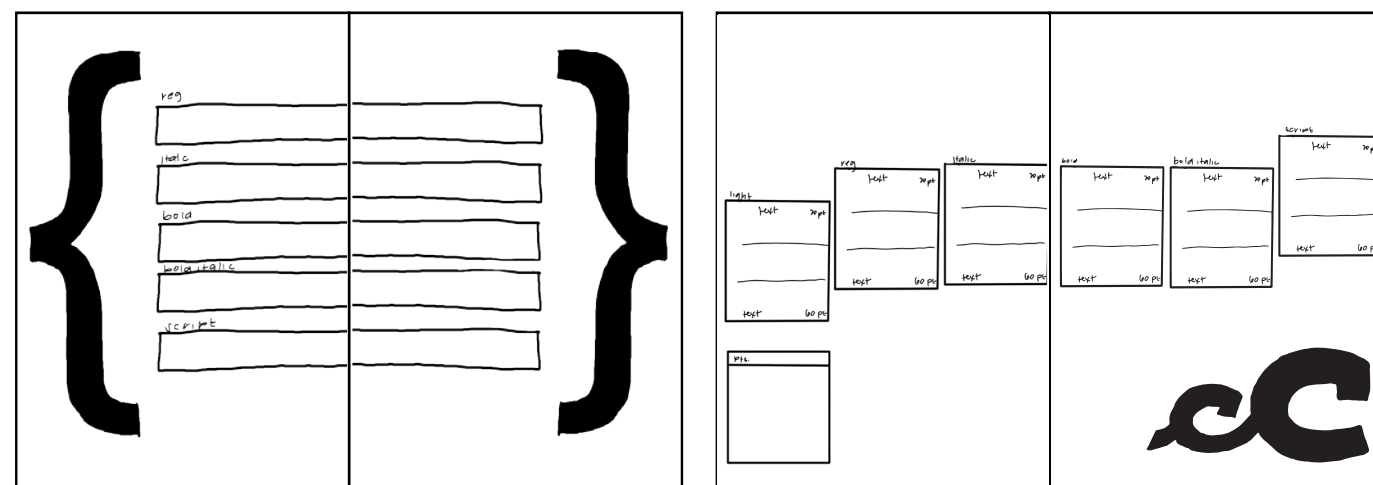
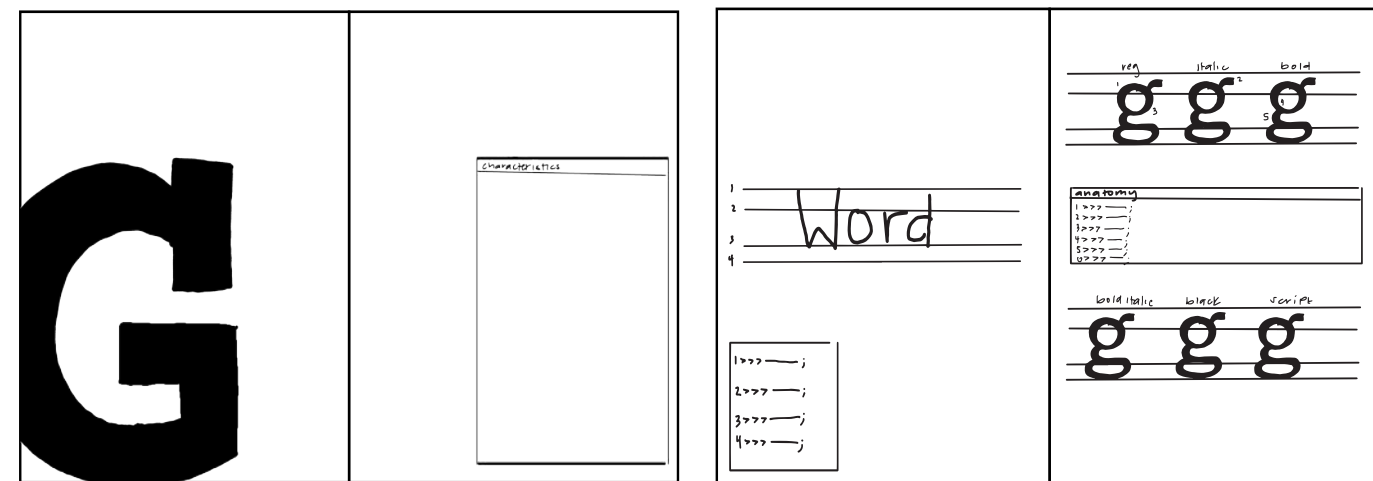
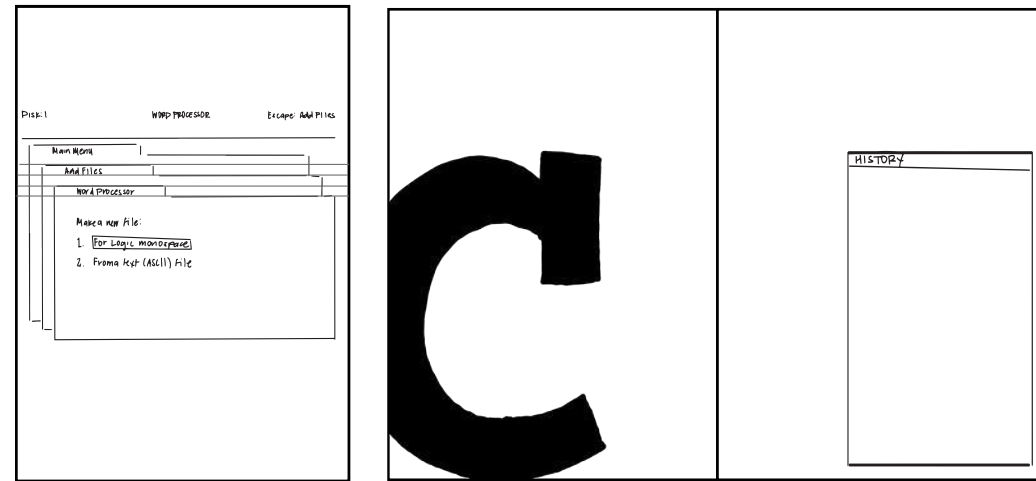
# Option 1 Grids

<p>Logic Monospace</p>	<p># history</p> <p>Back- END</p> <p>“ ”</p>	<p>characteristic #</p> <pre>//use algorithm { } { } { }</pre>
------------------------	--	--

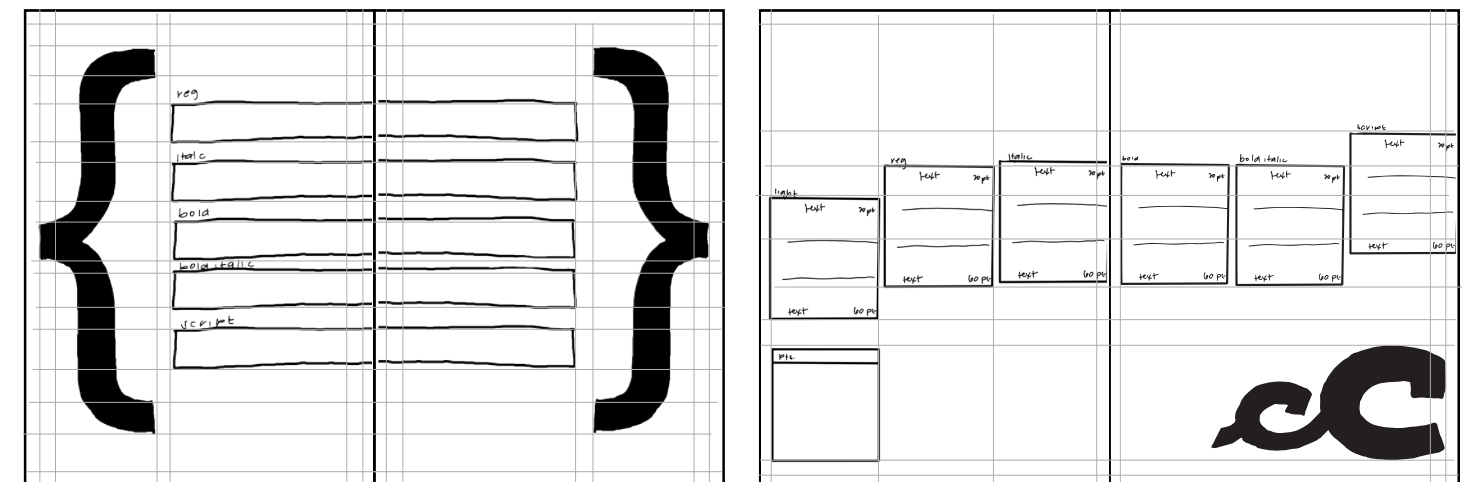
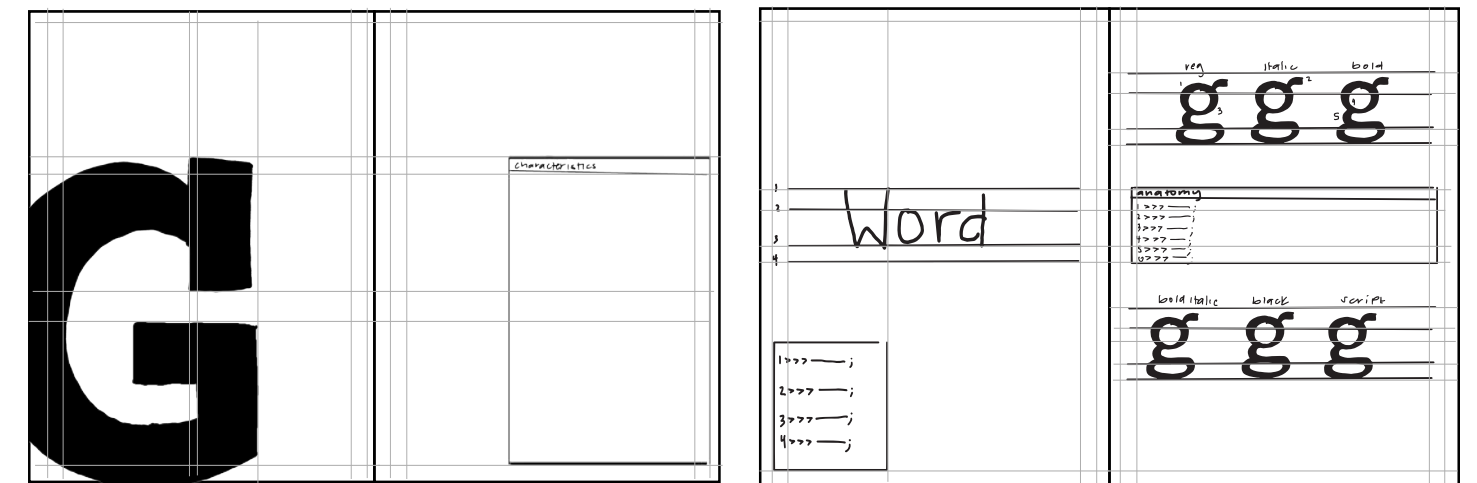
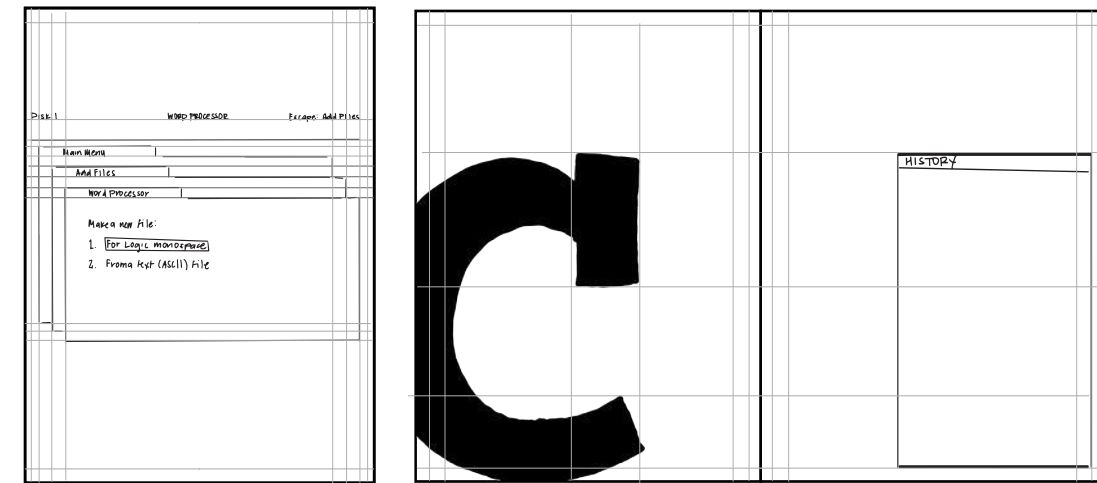
<p># anatomy</p> <p>accent</p> <p>False</p> <p>descent</p> <pre>1 2 def logic_monospace 3 class - slaw serif 4 5 6 7 8 9 10</pre>	<p>anatomy #</p>	<p># weights</p>	<p>characters #</p> <pre>1 ##decompositions# 2 3 def type - case 4 5 6 while NUM = 7 8 9 def special_characters 10 11 for glyphs in alternak: 12 print ( )</pre>
---	------------------	------------------	--

<p>monospaced</p> <p>monoscript</p>	<p>“ I, Robot ”</p> <p>note</p>	
-------------------------------------	---------------------------------	--

## Option 2



## Option 2 Grid





# Logic Mono ospace

# BACK- END

Logic is a technical monospace typeface in 5 weights of roman and italic styles, with a special connecting script version. The design takes inspiration from midcentury typewriter fonts with additional references in slab serifs.

**“This is a font that’s for function: no-nonsense, information-presenting occasions where anything flowery or billboard-worthy is totally unnecessary.”**

–Emily Gosling

Logic monoscript is a novel creation, with few examples of true connecting monospace scripts in existence.

**“Designing the monoscript was a unique engineering challenge, to try and get it to feel natural while still conforming to the standard widths of a typewriter font.”**

–Jeremy Mickel

After a couple of naming ideas that didn’t stick, Logic came to Mickel when he took a Python for Designers course early on in lockdown. He wrote down the word “Logic,” and it just fit.

Logic is a dream for body copy or large chunks of text. This also translates to its usefulness in editorial projects in captions, headlines, and logos. Despite it's usefulness for body, it does display its own personality and should be paired with other, more neutral typefaces.

You approach a person

```
,xXWMMWwNk;
;KMMMMMMMMMX:
cNMWMMWwMMWl
.dNMMMMWwMMx.
,lxxxxo,.
.,looddooooooodooc.
.kNMMMMMMMMMMMMWMMWXd.
oWMMMMMMMMMMMMMMMMMMWwO
.xMWkdXMMMMMMMMMMXdXWmX.
.xMWc,OMMMMMMMMMMO,:NMx.
.xMWc,OwMMMMMMMMMO,:NMx.
.xMWc'OMMMMMMMMMMO':NMx.
.xMWc'OMMMMMMMMMMO':NMx.
.xMWc'OMMMWNNWMMMO,:NMk.
.xMWc'OMMMx;;kMMMO,:NMx.
:Ok,'OMWMO oMMMO,'xO:
'OMMMo..oMMMK,
'OMMMo..oMMMK,
'OMMMo..oMMMK,
'OWMMo..oMMMK,
'OMMMd..oMMMK,
'OMMMd..oMMMK,
'OMMMd..oMMMK,
'OMMMo..oWMMO'
.dNMX; ;KMwX.
```

What are your typeface specifications

```
>CASE: monospace
>CLASSIFICATION: slab serif
>DESIGNER: Jeremy Mickel
>RELEASE DATE: Fall 2020
>FOUNDRY: MCKL
```

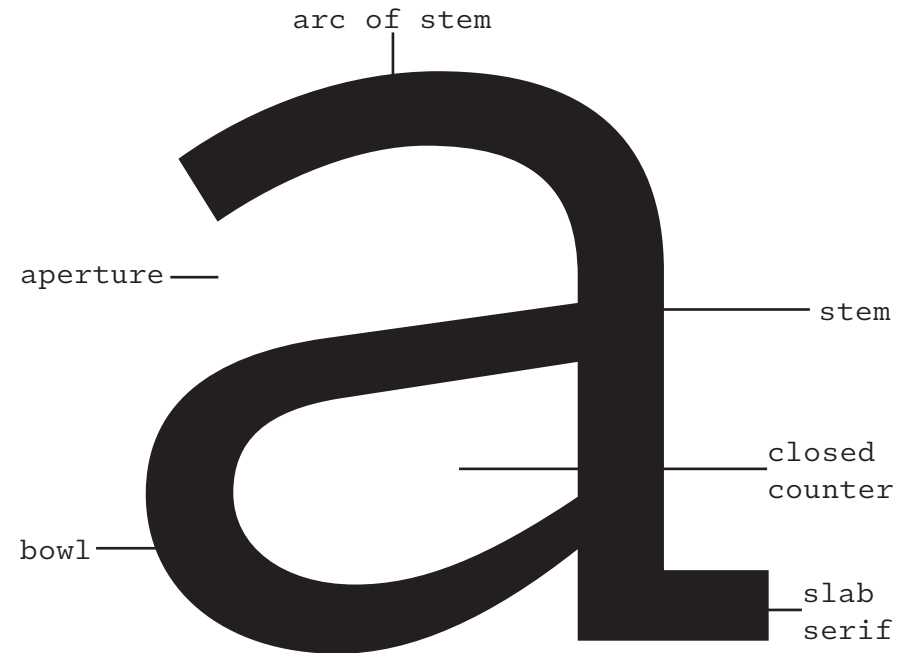
1  
2  
3  
4  
5

False

```

1
2
3
4 #LINES
5
6 def horizontal_lines():
7     if num is 1:
8         print ("ascent line");
9     if num is 2:
10        print ("capline");
11    if num is 3:
12        print ("mean line");
13    if num is 4:
14        print ("baseline");
15    if num is 5:
16        print ("descent line");
17
18
19
20

```



## Light

The whole point was to practice nuclear war without destroying ourselves; to get the computer to learn from mistakes we could not afford to make.

14 pt

a

60 pt

## Regular

The whole point was to practice nuclear war without destroying ourselves; to get the computer to learn from mistakes we could not afford to make.

14 pt

a

60 pt

## Italic

*The whole point was to practice nuclear war without destroying ourselves; to get the computer to learn from mistakes we could not afford to make.*

14 pt

a

60 pt

## Bold

**The whole point was to practice nuclear war without destroying ourselves; to get the computer to learn from mistakes we could not afford to make.**

14 pt

a

60 pt

## Bold Italic

***The whole point was to practice nuclear war without destroying ourselves; to get the computer to learn from mistakes we could not afford to make.***

14 pt

a

60 pt

```

1
2
3
4 #GLYPHS
5
6     if letters = upper_case
7         print
8             ("ABCDEFGHIJKLMNOPQRSTUVWXYZ");
9
10    if letters = lower_case
11        print
12            ("abcdefghijklmnopqrstuvwxyz");
13
14    def script_characters():
15        print
16            ("abcdefghijklmnopqrstuvwxyz");
17
18    def special_characters
19        print
20            ("~!@#$%^&*+=<>, -/?' ; : . { } | \ [ ]");

```





Information about the  
typeface taken from AIGA  
*Eye on Design's* article  
“A Very Niche, Very  
Logical Font Inspired by  
Vintage Typewriters +  
Python Script”

ospace



Logic Monospace

Type Specimen



Logic Monospace  
ospace

GRDS-201-N01

## BACK- END

Logic is a technical monospace typeface in 5 weights of roman and italic styles, with a special connecting script version. The design takes inspiration from midcentury typewriter fonts with additional references in slab serifs.

**“This is a font that’s for function: no-nonsense, information-presenting occasions where anything flowery or billboard-worthy is totally unnecessary.”**

–Emily Gosling

Logic monoscript is a novel creation, with few examples of true connecting monospace scripts in existence.

**“Designing the monoscript was a unique engineering challenge, to try and get it to feel natural while still conforming to the standard widths of a typewriter font.”**

–Jeremy Mickel

After a couple of naming ideas that didn’t stick, Logic came to Mickel when he took a Python for Designers course early on in lockdown. He wrote down the word “Logic,” and it just fit.

Logic is a dream for body copy or large chunks of text. This also translates to its usefulness in editorial projects in captions, headlines, and logos. Despite it’s usefulness for body, it does display its own personality and should be paired with other, more neutral typefaces.

You approach a person

```
,xXWWWwNk;
;KMMMMMMMMX;
eNMMWWWWWl
.dNMMWWwNk.
, lxxxxo, .
., looddoooooooc.
.kNMMMMMMMMMMMMMMMMWXd.
oWMMMMMMMMMMMMMMMMMMWw.
.xMwkdXMMMMMMMMMMXdXwMx.
.xMwC, OMMMMMMMMMMO, :NMx.
.xMwC, OMMMMMMMMMMO, :NMx.
.xMwC' OMMMMMMMMMMO' :NMx.
.xMwC' OMMMMMMMMMMO' :NMx.
.xMwC' OMMMMMMMMMMO, :NMk.
.xMwC' OMMX; ;kMMMO, :NMx.
:Ok, 'OMWwO oMMMO, 'xO:
'OMMO. oMMMK,
'OMMO. oMMMK,
'OMMO. oMMMK,
'OMMO. oMMMK,
'OMMd. oMMMK,
'OMMd. oMMMK,
'OMMd. oMMMK,
'OMMO. oMMMO'
.dNMX; ;kMwX.
```

What are your typeface specifications

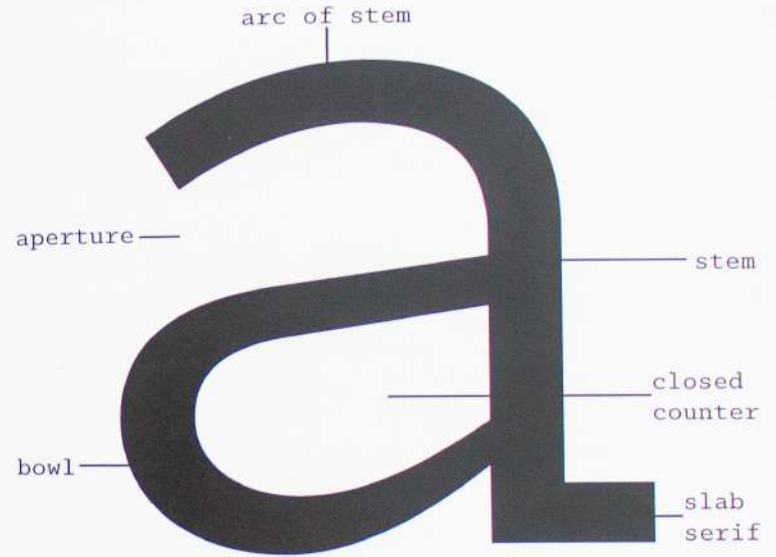
```
>CASE: monospace
>CLASSIFICATION: slab serif
>DESIGNER: Jeremy Mickel
>RELEASE DATE: Fall 2020
>FOUNDRY: MCKL
```

1  
2  
3 False 4  
5

```

1
2
3
4  **LINES**
5
6  def _horizontal_lines
7      if num is 1:
8          print (ascent line);
9      if num is 2:
10         print (capline);
11     if num is 3:
12         print (mean line);
13     if num is 4:
14         print (baseline);
15     if num is 5:
16         print (descent line);
17
18
19
20

```



## Light

The whole point was to practice nuclear war without destroying ourselves; to get the computer to learn from mistakes we could not afford to make.

14 pt

a

60 pt

## Regular

The whole point was to practice nuclear war without destroying ourselves; to get the computer to learn from mistakes we could not afford to make.

14 pt

a

60 pt

## Italic

*The whole point was to practice nuclear war without destroying ourselves; to get the computer to learn from mistakes we could not afford to make.*

14 pt

a

60 pt

## Bold

**The whole point was to practice nuclear war without destroying ourselves; to get the computer to learn from mistakes we could not afford to make.**

14 pt

a

60 pt

## Bold Italic

***The whole point was to practice nuclear war without destroying ourselves; to get the computer to learn from mistakes we could not afford to make.***

14 pt

a

60 pt

```

1
2
3
4 #GLYPHS
5
6     if letters = upper_case
7         print
8             ("ABCDEFGHIJKLMNOPQRSTUVWXYZ");
9
10    if letters = lower_case
11        print
12            ("abcdefghijklmnopqrstuvwxyz");
13
14    def script_characters():
15        print
16            ("abcdefghijklmnopqrstuvwxyz");
17
18    def special_characters
19        print
20            ("~!@#$$%^&*+=<>,-/?';:~{|\\[ ]");

```

monospaced

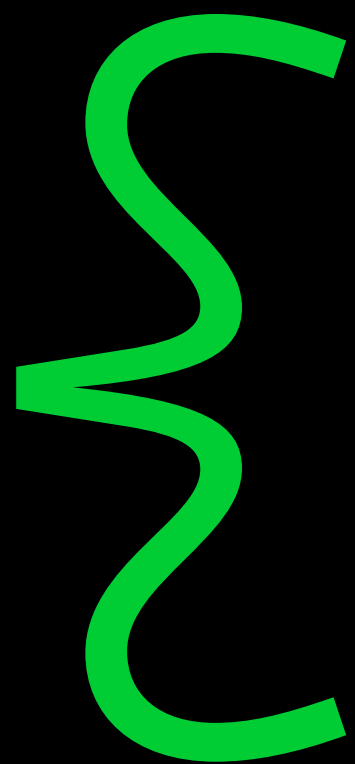
monoscript



Information about the  
typeface taken from AIGA  
*Eye on Design's* article  
"A Very Niche, Very  
Logical Font Inspired by  
Vintage Typewriters +  
Python Script"

ospace





# Logic Monospace

```
1
2
3
4
5
6
7 #CHARACTERS
8
9     if letters = upper_case
10         print
11         ("ABCDEFGHIJKLMNOPQRSTUVWXYZ");
12
13     if letters = lower_case
14         print
15         ("abcdefghijklmnopqrstuvwxyz");
16
17
18
19
20
```

```
1
2
3
4
5
6
7  #GLYPHS
8
9  def numbers():
10     print
11     ("1234567890");
12
13  def special_characters
14     print
15     ("~!@#$%^&*+=+<>, -/?;: .{ } [ ]");
16
17
18
19
20
```

showing a  
technical  
monospace  
spectacle

